

Affected Areas

Oropharynx
(e.g. lips, mouth,
esophagus)
GI tract

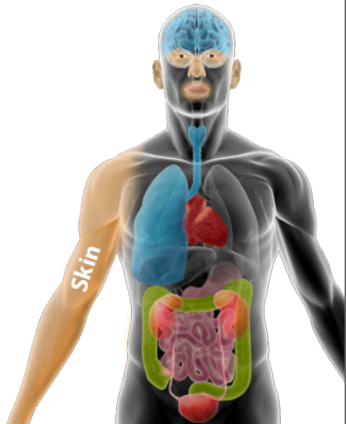
Immediate Symptoms

Burns
Nausea
Vomiting (possibly with blood)
Diarrhea (possibly with blood)
Belly Pain
Drooling
Potential mucosal membrane
and inhalation effects

Ongoing Symptoms

Systemic toxicity (based on dose and toxin)*

*Warning: May rapidly progress to systemic toxicity



Examples

Chemical Warfare Agents

Phosgene*
Lewisite*

Toxic Industrial Chemicals/Toxic Industrial Materials

Ammonia
Chlorine
Phosgene*

*May be weaponized

**Route of exposure may include contamination of food and water as well as introduction to food, beverages, and consumables

Common Treatment Protocols

Very dependent on specific chemical(s) involved; may involve:
Activated charcoal
Anti-emetics

Sensitive Populations

No particularly sensitive populations

Concerns About This Syndrome

Crossover with central nervous system effects may occur, requiring systemic treatment specific to the chemical(s) involved (e.g., atropine and 2-PAM chloride for organophosphate/nerve agents).