

Affected Areas

All organ systems

Especially:

Central nervous system
Heart

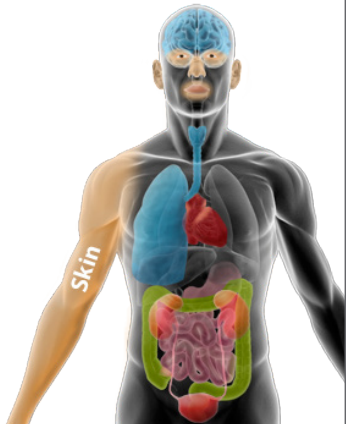
Immediate Symptoms

Hyperventilation followed by hypotension
Loss of consciousness
Trismus (lockjaw)
Opisthotonus (neck arching)
Breathing cessation
Cardiac arrest

Ongoing Symptoms

With high inhalational dose:

Initially: Gasping
Within 30-60 seconds: Loss of consciousness and convulsions
Within 10 minutes: Respiratory and cardiac arrest.
Rapidly fatal if untreated



CHEMM Not meant to be a complete care guideline. Please refer to the CHEMM website for more information: <https://chemm.hhs.gov/mmghome.htm>

Examples

Chemical Warfare Agents

Cyanides (inorganic and organic)*

Toxic Industrial Chemicals/Toxic Industrial Materials

Cyanides (inorganic and organic)*
Hydrogen sulfide
Azides
Rotenone
Sodium monofluoroacetate

*May be weaponized

Common Treatment Protocols

Amyl nitrite
Sodium nitrite
Sodium thiosulfate
Hydroxocobalamin
Airway and breathing support
Oxygenation

Sensitive Populations

No particularly sensitive populations

Concerns About This Syndrome

No special concerns

CHEMM Not meant to be a complete care guideline. Please refer to the CHEMM website for more information: <https://chemm.hhs.gov/mmghome.htm>