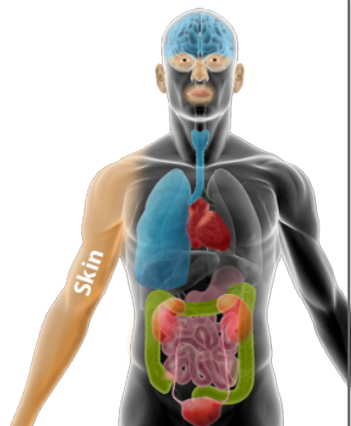


Affected Areas

Central Nervous System
Cardiac

**Immediate Symptoms**

Altered state of consciousness
Progression from fatigue and lightheadedness to coma
Seizures
Cardiac Signs

Ongoing Symptoms**Inhalation Exposure**

Mild to moderate:
Flushing of the skin
Fatigue
Lightheadedness

Severe:
Nausea
Anxiety
Difficulty breathing

Life Threatening:
Convulsions
Respiratory distress

Fatal:
Severe convulsions
Irreversible respiratory distress

Ingestion Exposure

Mild to moderate:
Vomiting
Abdominal pain
Fatigue
Lightheadedness

Severe:
GI irritation
Sedation
Confusion
Mild increased lactate
Seizures/convulsions

Life Threatening:
Hypotension
GI Perforation

Lactic acidosis apnea
Coma
Seizure
Hematemesis

Fatal:
Refractory
hypotension
High lactate
Academia (metabolic and respiratory)
Refractory bradycardia

Examples**Chemical Warfare Agents**

Cyanide*

Toxic Industrial Chemicals/Toxic Industrial Materials

Cyanide*
Sodium azide
Carbon monoxide
Aniline
Arsine
Nitrogen
*May be weaponized

Common Treatment Protocols

Supportive care for all agents and to rule out other diagnoses: Oxygen

For cyanides: Cyano kits

For other agents specific antidotes may be available:
Chelators for arsenic

Sensitive Populations

No particularly sensitive populations

Concerns About This Syndrome

No special concerns.