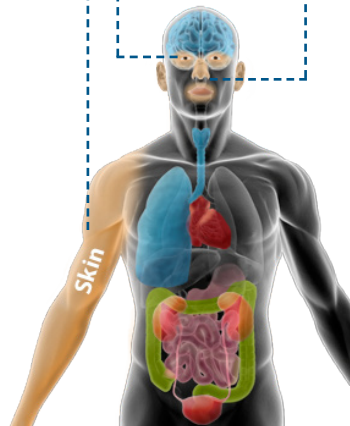


Affected Areas

Mucosal membranes

Eyes

Skin

**Immediate Symptoms**

Minor to severe irritation, including:

- Pain
- Redness/erythema
- Blistering
- Sloughing
- Tearing/lacrimation

Ongoing SymptomsMay lead to systemic toxicity
(e.g. organ failure)**Sensitive Populations**Children and pregnant women
(may absorb more)**Examples**

- Mustard agents
- Phosgene
- Chlorine
- Hydrofluoric acid
- Riot control agents
- Methylene chloride

Common Treatment Protocols

- Decontamination
 - Eyewash
 - Emergency safety shower
 - Mass decontamination procedures
- Supportive care
 - Oxygen
 - Pain medication

This is not meant to be a complete care guideline. Please refer to the CHEMM website for more information: <https://chemm.hhs.gov/mmg/home.htm>